

ARABIAN RANCHES III

SPRING

FLOOR PLANS

EMAAR

ARABIAN RANCHES III

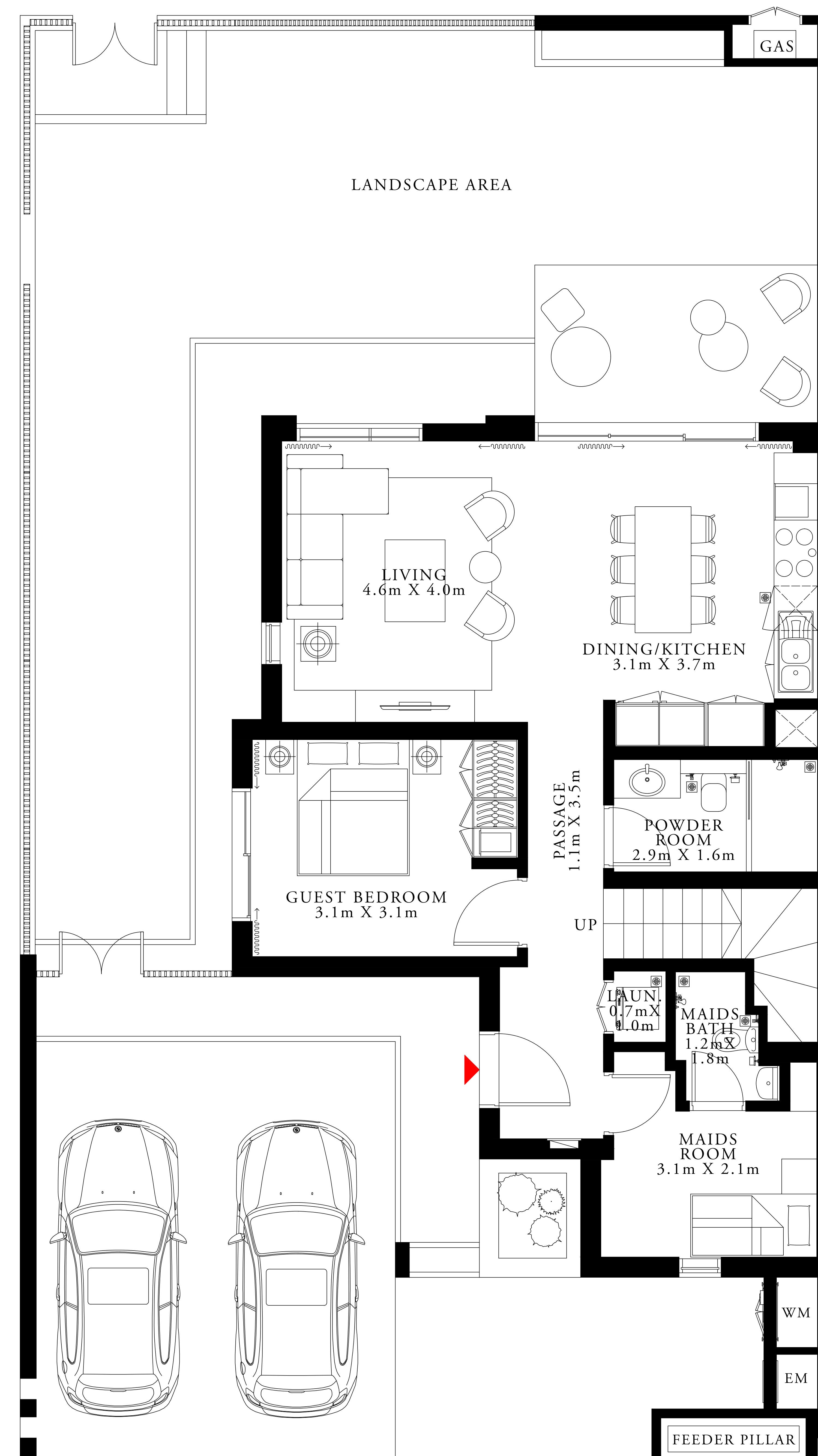
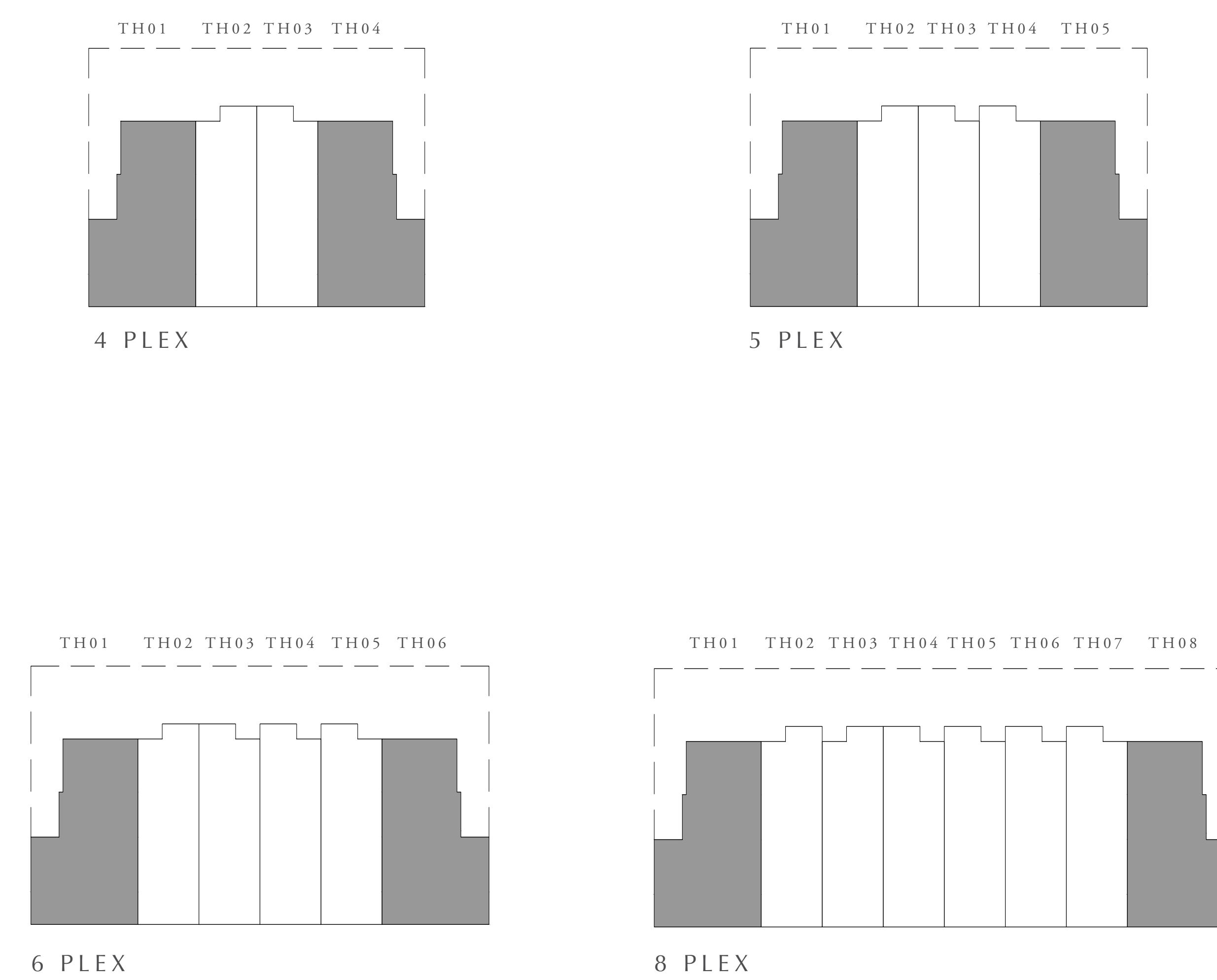
SPRING

4 BEDROOM

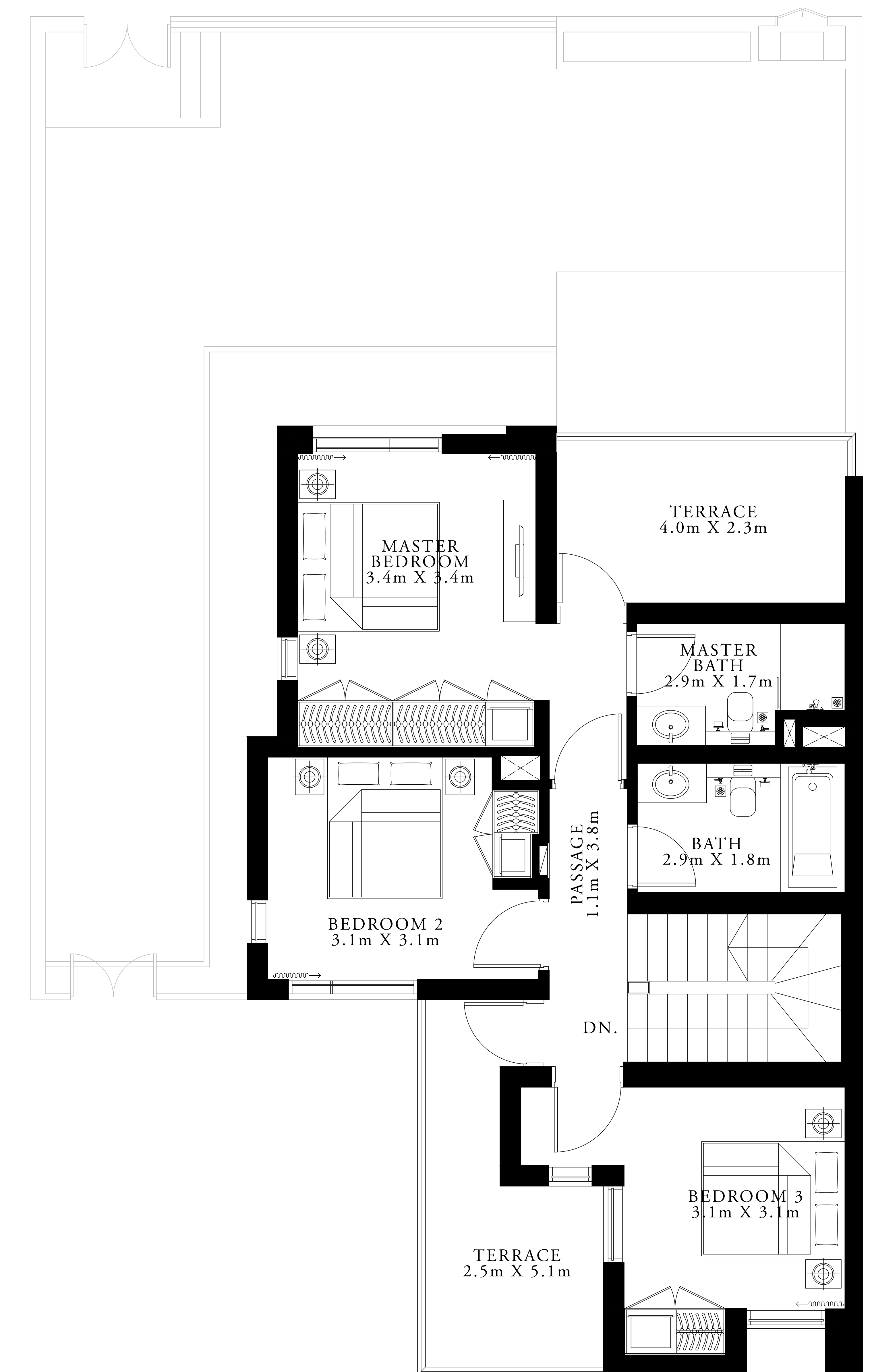
TYPE 6

UNIT	TOTAL AREA	
4 PLEX - TH01	2583.55 SQ.FT.	240.02 SQ.M.
4 PLEX - TH04		
5 PLEX - TH01		
5 PLEX - TH05		
6 PLEX - TH01		
6 PLEX - TH06		
8 PLEX - TH01		
8 PLEX - TH08		

KEY PLAN



GROUND FLOOR



FIRST FLOOR

FLOOR PLAN 1. All dimensions are in imperial and metric, and measured from finish to finish excluding construction tolerances. 2. All materials, dimensions, and drawings are approximate only. 3. Information is subject to change without notice, at developer's absolute discretion. 4. Actual area may vary from the stated area. 5. Drawings not to scale. 6. All images used are for illustrative purposes only and do not represent the actual size, features, specifications, fittings, and furnishings. 7. The developer reserves the right to make revisions / alterations, at it's absolute discretion, without any liability whatsoever.

ARABIAN RANCHES III

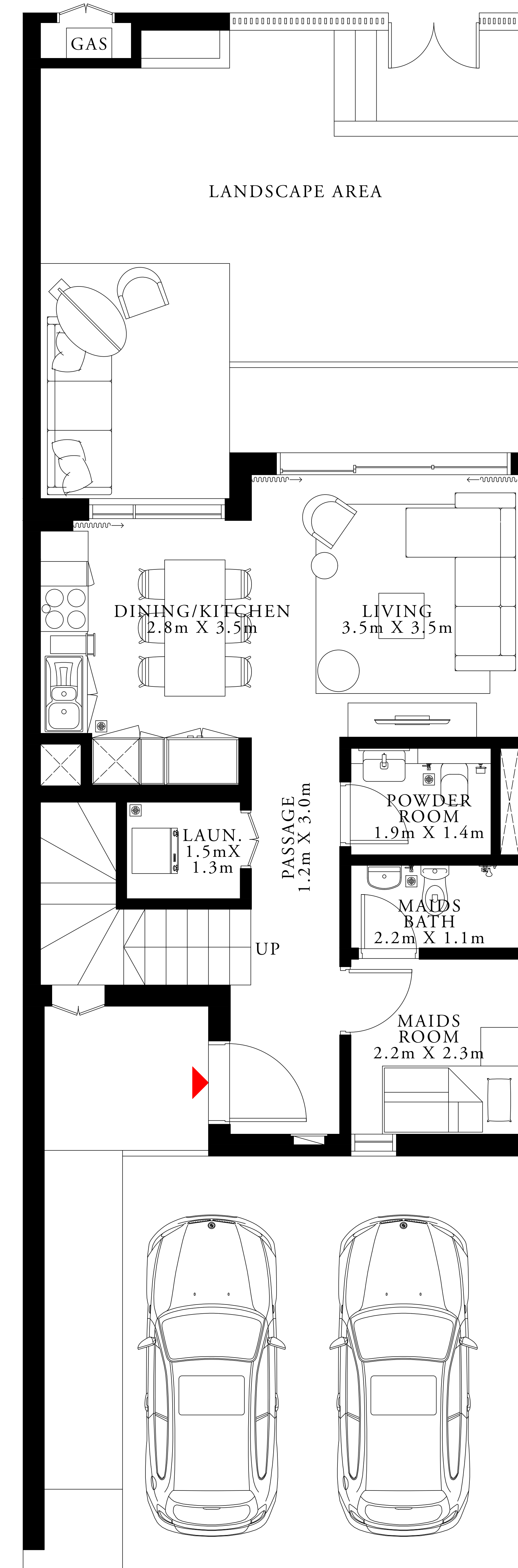
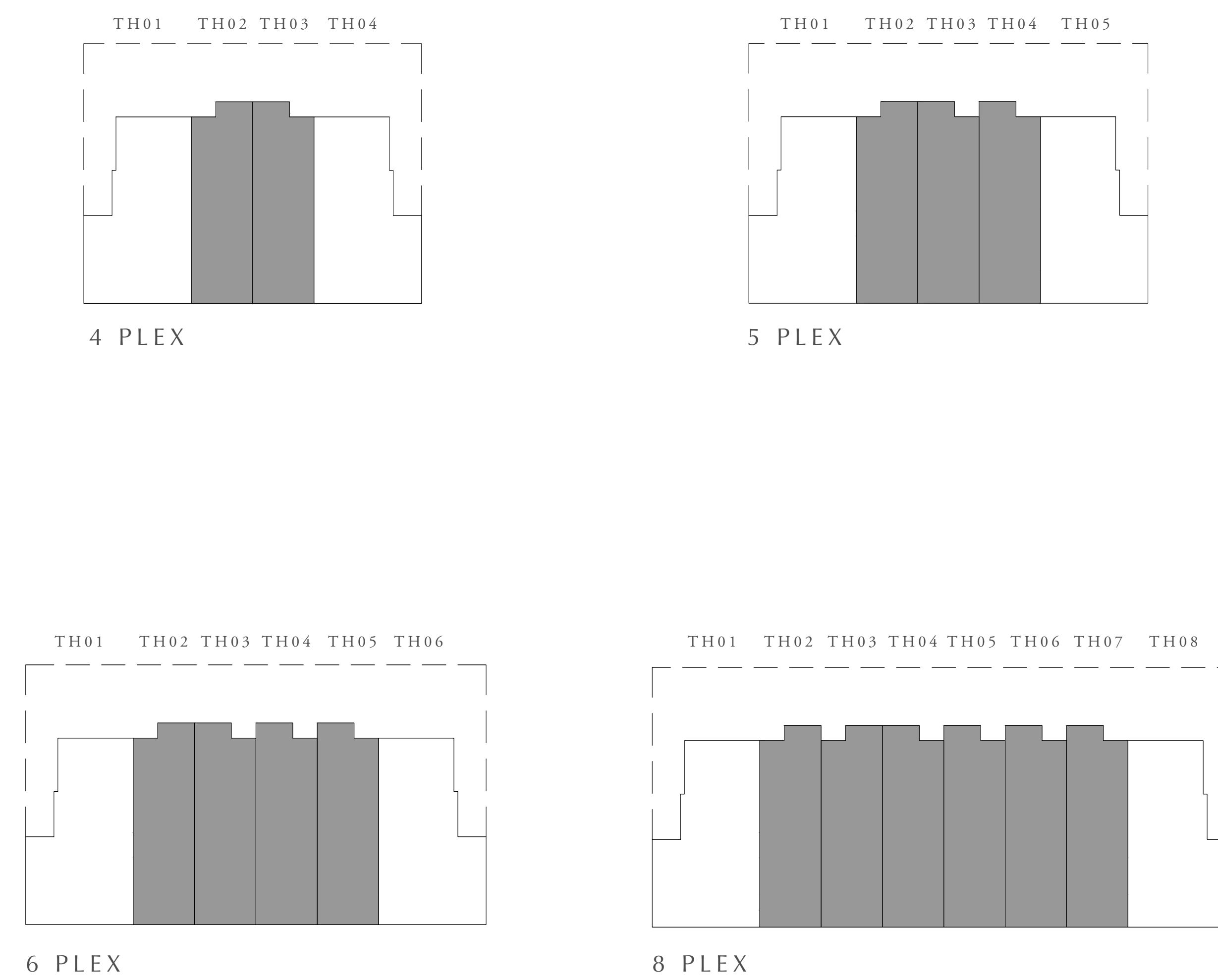
SPRING

3 BEDROOM

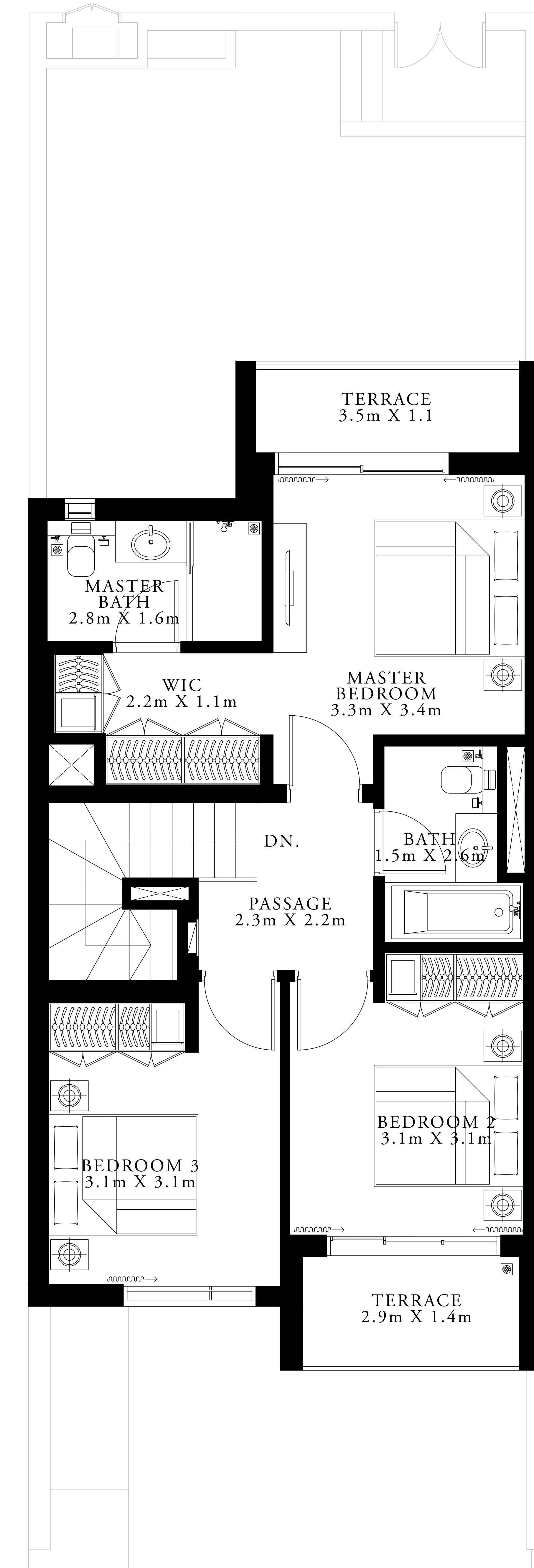
TYPE 6

UNIT	TOTAL AREA	
5 PLEX - TH03	1941.16 SQ. FT.	180.34 SQ. M.
4 PLEX - TH02 4 PLEX - TH03	1941.70 SQ. FT.	180.39 SQ. M.
5 PLEX - TH02 5 PLEX - TH04 6 PLEX - TH02 6 PLEX - TH05 8 PLEX - TH02 8 PLEX - TH07	1942.02 SQ. FT.	180.42 SQ. M.
8 PLEX - TH03 8 PLEX - TH04 8 PLEX - TH05 8 PLEX - TH06	1942.89 SQ. FT.	180.50 SQ. M.
6 PLEX - TH03 6 PLEX - TH04	1943.42 SQ. FT.	180.55 SQ. M.

KEY PLAN



GROUND FLOOR



FIRST FLOOR

FLOOR PLAN 1. All dimensions are in imperial and metric, and measured from finish to finish excluding construction tolerances. 2. All materials, dimensions, and drawings are approximate only. 3. Information is subject to change without notice, at developer's absolute discretion. 4. Actual area may vary from the stated area. 5. Drawings not to scale. 6. All images used are for illustrative purposes only and do not represent the actual size, features, specifications, fittings, and furnishings. 7. The developer reserves the right to make revisions / alterations, at its absolute discretion, without any liability whatsoever.

For more information on ARABIAN RANCHES III
please call 800 36227 (UAE) or +971 4 366 1688 (International).

Visit our online sales centre at emaar.com or
any of our Sales Centres across the UAE.

DUBAI

Emaar Sales Centre | Downtown Dubai

Dubai Hills Estate Sales Pavilion | Umm Suqeim Road

Dubai Creek Harbour Sales Pavilion | Ras Al Khor

Emaar South Sales Centre | DWC Peripheral Road

ABU DHABI

Emaar Sales Centre | Al Nahda Tower, Ground Floor, 4th Street, Corniche, Al Muroor Road

9:30am to 7pm Saturday - Thursday

Friday from 2:00 pm to 7:00 pm (All locations except Abu Dhabi Sales Centre)

EMAAR